

WCRP

World Climate Research Programme



World Climate Research Programme Director's Report

Ghassem R. Asrar
Director, WCRP



WMO



IOC



ICSU

International Council for Science



Staff Members



Major Activities since last JSC-33:

- conferences/meeting/events
- major publications



Budget of 2012 and 2013



Activities planned for 2014/2015



Ghassem Asrar
Director



Vladimir Ryabinin
Sr Scientific Officer



Roberta Boscolo
Communication/Scientific Officer



WCRP Secretariat is located in Geneva, Switzerland.



Valery Detemmerman
Sr Scientific Officer



Michel Rixen
Sr Scientific Officer



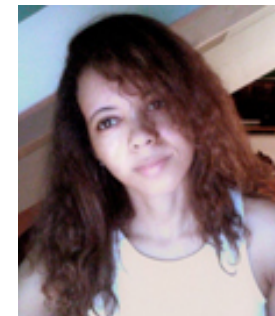
Teresa Alcober
Administrative Assistant



Catherine Michaut
French Support Unit located in Paris



Anne Chautard
Administrative Assistant



Isabel Hall
Secretary

WCRP

World Climate Research Programme



CliC Team



CliC (IPO is located in Tromso, Norway)

Greg Flato
SSG Chair



Jenny Baeseman
Director



Heidi Isaksen
Administrative Office



Vladimir Ryabinin
JPS Liaison



ICSU

International Council for Science



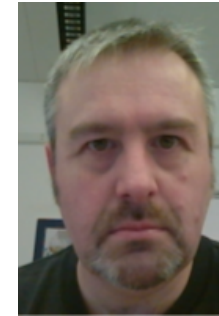
ICPO Secretariat is located in Southampton, UK.



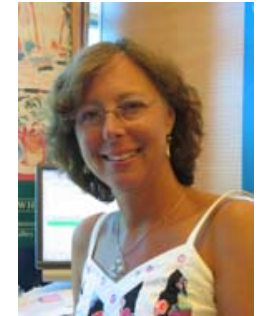
Roger Barry
Director



Anna Pirani
*Science Officer,
located in Trieste*



Tim Waterfield
Web Developer



V. Detemmerman
JPS Liaison



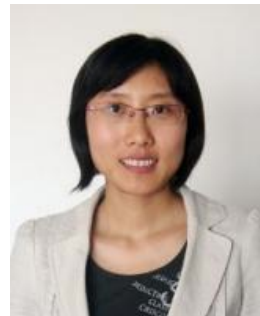
Nico Catalbiano
Science Officer



Carlos Ereno
*Science Officer,
located in Buenos Aires*



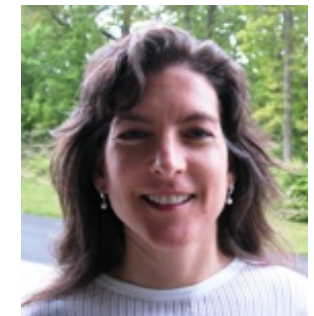
Jennifer Riley
Science Officer



Xiaohui Tang
*Science Officer,
located in Qingdao*



**Prof. Martin
Visbeck**
*Co- Chair of
the SSG*



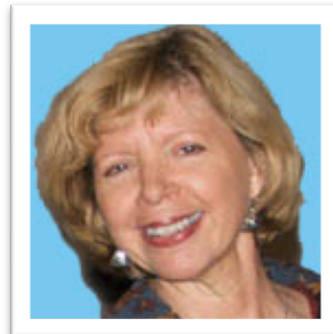
**Dr. Lisa
Goddard**
*Co-Chair of
the SSG*



IGPO Secretariat is located in Columbia MD, USA.



Peter van Oevelen
Director



Dawn P. Erlich
Assistant to Director



Valery Detemmerman
JPS Liaison



**Dr. Kevin
Trenberth**

**Chair of
the SSG**



**Prof. Howard
Wheater**

**Vice-Chair of
the SSG**



Shannon Macken
Administrative Support



Sam Benedict
Sr. Science Officer

WCRP

World Climate Research Programme



SPARC Team



SPARC (IPO is located in Zurich, Switzerland, and Toronto, Canada)

Joan Alexander
SSG Co-Chair



Greg Bodeker
SSG Co-Chair



Johannes Staehelin
Director



Carolyn Arndt
Scientific Officer



Diane Pendlebury
*Project Scientist
located in Toronto*



Fiona Tummon
Scientific Officer



Anke Witten
Office Manager



Vladimir Ryabinin
JPS Liaison



ICSU

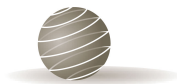
International Council for Science



**Workshop on Decadal and Multidecadal
Variability in Pacific and Indian Ocean**
04-07 September 2012, Qingdao CHINA



**Workshop on Interdecadal Variability of the
Global Monsoon**
10-12 September 2012, Nanjing CHINA



**GEWEX Pan-Global Atmospheric System
Studies Science Meeting**
10-14 September 2012, Boulder USA



3rd International Conference on Earth System Modelling

17-21 September 2012, Hamburg GERMANY



GEWEX Workshop on the Water Vapor Assessment

26-28 September 2012, Frankfurt GERMANY



Earth Observation and Cryosphere Science

13-16 November 2012, Frascati ITALY



CORDEX-WRF Workshop and Tutorial
01-05 October 2012, Tenerife SPAIN



CORDEX-South Asia Training Workshop
17-20 October 2012, Pune INDIA



CORDEX-East Asia Workshop
06-08 November 2012, Jeju KOREA



Regional SPARC Workshop: Southern Hemisphere and South America

26-27 November 2012, Buenos Aires ARGENTINA



Ocean Synthesis and Air-Sea Flux Evaluation Workshop

27-30 November 2012, Woods Hole USA



Ice Sheet System Model Workshop

10-12 December 2012, Irvine USA



Evaluation of ENSO Processes on Climate Models

21-23 January 2013, Hobart AUSTRALIA



Workshop on Sea-Level Rise, Ocean/Ice Shelf Interaction and Ice Sheets

18-20 February 2013, Hobart AUSTRALIA



Workshop on Climatic Effects of Ozone Depletion in the Southern Hemisphere

25 Feb-1 March 2013, Buenos Aires ARGENTINA



Regional Workshop on Stratosphere-Troposphere Processes and their role in Climate
01-03 April 2013, Kyoto JAPAN



4th WGNE Workshop on Systematic Errors in Weather and Climate Models
15-19 April 2013, Exeter UK



SPARC DynVar and SNAP Workshop
22 -26 April 2013, Reading UK



July 2012

- 1st Session of WMAC, Beijing CHINA
- 1st Session of WDAC, Beijing CHINA



September 2012:

- 15th Session of WGSIP, Hamburg GERMANY
- 16th Session of WGCM, Hamburg GERMANY



October 2012:

- 25th Session of GEWEX SSG, Sydney AUSTRALIA



November 2012:

- 28th Session of WGNE, Toulouse FRANCE
- 20th Session of SPARC SSG, Buenos Aires ARGENTINA



February 2013:

- 9th Session of CliC SSG, Potsdam GERMANY



March 2013:

- 2nd Session of WDAC, Darmstadt GERMANY



April 2013

- 1st Session of WGRC, Vienna AUSTRIA



May 2013

- 20th Session of CLIVAR SSG, Kiel GERMANY



Sponsored Students and Early Career Scientists in 2012 - 2013

	Africa	Americas	Asia	Europe	Oceania
ECS 2012	6	23	10	20	2
Students 2012	1	5	5	2	3
ECS 2013	1	8	7	11	1
Students 2013	3	3	3	9	1
Total	11	39	25	42	7

**Total 124
Students and ECSs**

WCRP

World Climate Research Programme



WCRP Budget

JCRF FUNDS AVAILABLE 2011-2013 (CHF)

	2011	2012	2013 est
BALANCE BROUGHT FORWARD	1,559,000	1,662,000	1,600,000
WMO	1,875,600	1,863,000	1,824,000
ICSU	523,000	525,000	525,000
IOC	48,000	20,000	60,000
Open Science Conference	700,000		
TOTAL INCOME	3,146,000	2,408,000	2,409,000
TOTAL FUNDS AVAILABLE	4,705,000	4,070,000	4,009,000



ICSU

International Council for Science



JCRF EXPENDITURES 2011-2013 (CHF)

	2011	2012	2013 est
SALARIES AND RELATED COSTS	1,389,000	1,731,500	1,731,500
OPERATING EXPENSES	136,000	131,500	100,000
MEETING SUPPORT	1,040,000	807,000	1,142,000
TOTAL EXPENDITURES	2,565,000	2,670,000	2,670,000



Project Offices Sponsors and Budget 2011-2013

		(USD)		
		2011	2012	2013 est
GEWEX	USA	697,000	675,000	675,000
CLIVAR	UK	302,000	300,000	300,000
	USA	160,000	187,000	187,000
	ICPO Total	462,000	487,000	487,000
SPARC	WCRP	21,500 (*)	21,000	20,000
	Switzerland	312,000	405,000	390,000
	Canada	325,000	127,000	100,000
	SPARC IPO Total	659,000	553,000	510,000
CLiC	Norway	(no staff costs) 8600	246,000	237,000
Paris	France	152,000	152,000	152,000
TOTAL		1,978,600	2,113,000	2,061,000

(*) ad personam

WCRP

World Climate Research Programme



WCRP Budget

National Contributions and Proposals (USD)

2011	2012	2013 est
590,000	612,000	750,000



ICSU

International Council for Science



PROJECT FUNDING PRIORITIES – CliC 2013

CliC	meeting	location	Date	support level allocated (used) (CHF)
	CliC SSG-9	Potsdam, Germany	2013 Feb	(21,400)
	Vulnerability of Permafrost Carbon Network mtg	Captiva island, FL, USA	2013 May	11,000
	Antarctic Ice rises Workshop	Tromsø, Norway	2013 Aug	8,500
	Arctic Freshwater Synthesis	Messinia, Greece	2013 Oct	10,000
	Estimating rates and sources of sea-level change during warm periods	Rome, Italy	2013 Oct	10,000
	Arctic CORDEX Workshop	Brussels, Belgium	2013 Nov	10,000
	Northern Hemisphere Polar Jet Stream and Links with Arctic Climate Change	Iceland	2013 Nov	10,000
	ESA DUE Permafrost Workshop	Frascati, Italy	2013 Nov	10,000
	Update of CliC Implementation Plan	TBD	TBD	5,000
	Arctic and Antarctic Observing System meetings, sponsorship of partners, early career scientists support, individual travel			30,000
subtotals				104,500 (21,400)



PROJECT FUNDING PRIORITIES – CLIVAR 2013

CLIVAR	meeting	location	Date	support level allocated (used) (CHF)
	WCRP/WGOMD-11/SOP workshop and sea-level/Ice sheet workshop	Hobart, Tasmania	2013 Feb	(31,800)
	WCRP Latin American and Caribbean SC Planning meeting	Buenos Aires, Argentina	2013 Feb	(12,000)
	CLIVAR SSG-20	Kiel, Germany	2013 April	(31,300)
	GSOP subsurf data workshop	Hobart, Tasmania	2013 June	5,000
	Pacific Panel-8 with Indian Ocean Panel-10	Lijiang, China	2013 July	10,000
	GSOP/GODAE Reanalysis and Ocean Heat Workshop	Reading, UK	2013 July	5,000
	VAMOS-16 with CORDEX Workshop	Lima, Peru	2013 Sept.	7,000
	AAMP-13 with IWM-V	Macau	2013 Oct	5,000
	Africa Panel meeting	Arusha, Tanzania	2013 Oct	7,000
	WCRP Africa Conference	Arusha, Tanzania	2013 Oct	20,000
	ETCCDI regional workshops	TBD	TBD	5,000
	ICPO staff travel and individual travel to participants			16,000 (9,500)
	subtotals			80,000 (84,600)



PROJECT FUNDING PRIORITIES – GEWEX 2013

GEWEX	meeting	location	Date	support level allocated (used) (CHF)
	ISCCP 30 th Anniversary Conference	City College, NY, USA	2013 April	(4,300)
	HyVic Planning Workshop	Reading, UK	2013 July	18,500
	GHP and GDAP meetings	Rio, Brazil	2013 Sept.	26,000
	GDAP Water Vapour Assessment Working Group	TBD, USA	2013 Sept.	5,000
	GDAP/LandFlux Working Group	Vienna, Austria	2013 Sept.	5,000
	GEWEX SSG-26	Boulder, CO, USA	2013 Oct	24,000
	WCRP Africa Conference and Africa Panel	Arusha, Tanzania	2013 Oct	20,000
	GLASS meeting and workshop	Exeter, UK	2013 Oct	10,000
	GHP/CORDEX session	Brussels, Belgium	2013 Nov	3,000
	GDAP Soil Moisture Assessment WG	TBD	TBD	5,000
IGPO staff travel and individual travel to participants				15,000 (7,000)
subtotals				116,500 (11,300)



PROJECT FUNDING PRIORITIES – SPARC 2013

SPARC	meeting	location	Date	support level allocated (used) (CHF)
	WCRP 2013 contribution to SPARC IPO		2013 Feb	(20,000)
	Lifetimes of halogen source gases	Zurich, Switzerland	2013 Jan	(5,000)
	SPARC Data Requirement Workshop	Frascati, Italy	2013 Feb	(5,300)
	SPARC Session with AMOS	Melbourne, Australia	2013 Feb	(7,300)
	Gravity Wave Activity Workshop	Bern, Switzerland	2013 April	(3,300)
	SPARC Joint DynVar/SNAP workshop	Reading, UK	2013 April	(9,300)
	SPARC Reanalysis/analysis Intercomparison Project	Exeter, UK	2013 April	(3,300)
	SPARC/IGAC Chemistry-Climate Model Initiative (CCMI)	Boulder, CO, USA	2013 May	(10,200)
	High-resolution Radiosonde Data	New York, USA	2013 May	3,000
	HEPPA-SOLARIS	TBD	TBD	
	Stratospheric Sulfur and its Role in Climate	Atlanta, GA, USA	2013 Oct	
	Past Changes in the Vertical Distribution of Ozone	Helsinki, Finland		10,000
	Temperature trends, WAVAS	TBD	TBD	
Capacity Development				
	SHARP Workshop for PhD students and Post-docs	Hamburg, Germany	2013 Feb	(2,000)
	Regional Workshop on Stratosphere-Troposphere Processes and their Role in Climate	Kyoto, Japan	2013 April	(3,000)
	Monsoon and Climate Change and Chemistry	Pune, India	2013 May	(2,400)
	7 th Atmospheric Limb Workshop	Bremen, Germany	2013 June	5,000
	Atmospheric Composition and Asian Monsoon	Rathmandu, Nepal	2013 June	3,000
2014	SPARC <i>General Assembly 2014</i> (to be prepared in 2013)	Queenstown, New Zealand	2014 Jan	70,000 + other sponsors
subtotals				91,000 (71,100)



Modelling, Observation and Regional Climate FUNDING PRIORITIES – 2013

Modelling	meeting	location	Date	support level allocated (used) (CHF)
CORDEX	CORDEX South Asia	Pune, India/Nepal	2013 July	10,000
	CORDEX South America	Lima, Peru	2013 Sept.	10,000
	CORDEX Statistical Downscaling Workshop	Trieste, Italy	2013 Sept.	10,000
	International Conference on Regional Climate (ICRC)	Brussels, Belgium	2013 Nov	30,000
WGCM	EUCLIPSE summer School 2013	Les Houches, France	2013 June	8,500
	CMIP-6 exploratory meeting	Aspen, CO, USA	2013 July	15,000
	WGCM-17 with AIMES	Victoria, Canada	2013 Oct	20,000
WGNE	4 th WGNE workshop on systematic errors	Exeter, UK	2013 April	(21,600)
WGSIP	Workshop on seasonal to decadal prediction	Toulouse, France	2013 April	(22,000)
WMAC	WMAC-2 (with JSC-34)	Brasilia, Brazil	2013 May	(21,600)
	WMAC Prize	TBD	TBD	5,000
Observations				
	WDAC-2	Darmstadt, Germany	2013 March	(11,700)
Regional Climate				
	1 st meeting of the Working Group on Regional Climate	Vienna, Austria	2013 April	(12,000)
	WGRC-2	Uruguay	TBD	20,000
	ICCS-3 side event	Jamaica	TBD	15,000
	Lund Workshop	Sweden	TBD	10,000
subtotals				153,500 (88,900)

WCRP

World Climate Research Programme



Grand Challenges FUNDING PRIORITIES – 2013

	meeting	location	Date	support level allocated (used) (CHF)
CLIC				
	WCRP Cryosphere in a Changing Climate	Tromsø, Norway	2013 Oct	18,300
CLIVAR				
GEWEX				
	WCRP Strategy Workshop for Global Water Resource Systems	Saskatoon, Canada	2013 June	9,000
	WCRP Strategy Workshop on Observations and Predictions of Precipitation	Fort Collins, CO, USA	2013 June	8,000
SPARC				
	Workshop on Climatic Effects of Ozone Depletion (with CLIC as contributing to PCPI)	Buenos Aires, Argentina	2013 Feb	(4,600)
Modelling				
	Cloud Circulation and Climate Sensitivity	TBD	TBD	10,000
subtotals				45,300 (4,600)



ICSU

International Council for Science

WCRP

World Climate Research Programme



WCRP Sponsors and Donors



ICSU

International Council for Science



Argentina



Australia



Austria



Belgium



Canada



China



Czech Rep.



Denmark



Finland



France



Germany



India



Greece



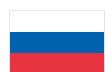
Japan



Netherlands



Norway



Russian Fed.



Serbia



South Africa



Spain



Sweden



Switzerland



Taiwan, China



Turkey



United Kingdom



United States of America



ICSU

International Council for Science



WCRP support for high priority climate science activities continue to grow.



Focus on WCRP Regional Climate Science and Grand Science Challenges gaining momentum.



Future plans and priorities of Core Projects are emerging with excellent support by their respective network of scientists and sponsors.



WCRP financial status remains sound.